



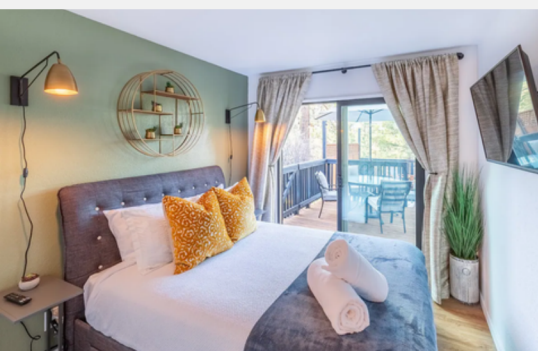
PETITE RETREAT  
Big Bear, CA

*Welcome*



# Table of contents

1. Welcome
2. About the Home
3. Wi-Fi
4. Important Contacts
5. Check-in/Check-out
6. Departure Checklist
7. House Rules
8. House Info
9. Transportation
10. Hot Tub Info
11. Fire Pit Info
12. Nearby Restaurants
13. Outdoor Activities
22. Family Activities
14. Seasonal Activities
15. Things to do
16. Trails
17. Social Media
18. Thank You



# Welcome

to Petite Retreat



**Thank you so much for choosing to stay at my cabin!**

We're looking forward to hosting you on your stay in Big Bear. Leave all your worries at the door. Come in and make yourself at home! Everything you need to know to have an enjoyable stay can be found in this guidebook.

*Hannah Pearson*

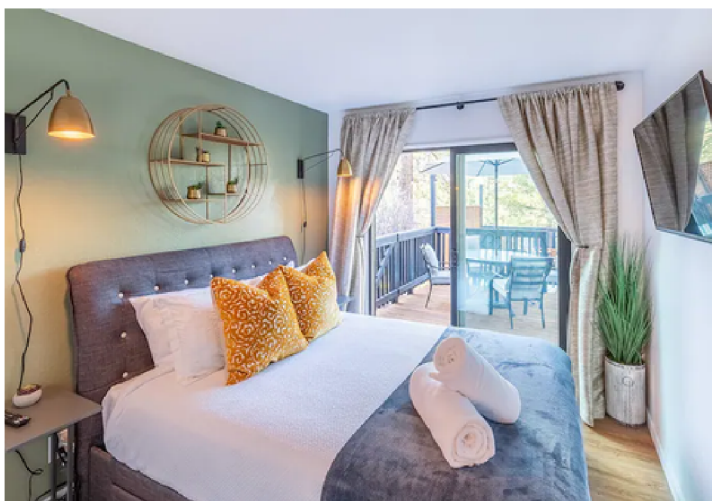


## ABOUT THE HOME

Welcome to Big Bear! Thank you so much for choosing to stay at my cabin. I hope you enjoy your time in this wonderful mountain town as much as I do. For years I've been visiting Big Bear to enjoy the skiing, snowboarding, hiking and clear mountain air, and I finally decided I needed to have a place to call my own! I was so excited to find a cabin that fit all my needs, and to be able to share it with others: a beautiful hillside neighborhood with a spectacular view and plenty of room for family and friends with close proximity to the slopes, the zoo, the lake and so many other outdoor adventures. I hope you enjoy your peaceful retreat or your adventurous vacation in the San Bernadino mountains, and please reach out if you need anything at all!



"Petite Retreat" is a newly remodeled cabin nestled in the pines of Big Bear. So much love and hard work have been poured into making this cabin a beautiful getaway for everyone to enjoy. Every detail was designed with your comfort and convenience in mind. Get cozy on the comfy couch in front of a fire and enjoy a good book or binge-watch Netflix! Just steps away from the national forest, you can go for a hike during the day and stargaze from the jacuzzi at night!



# Check-in/Check-out

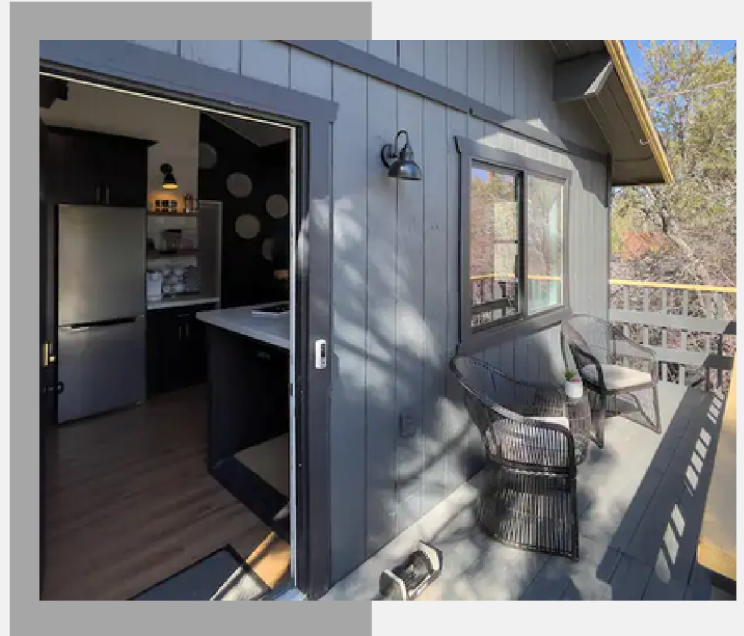
---

## CHECK-IN

**TIME: 3:00 PM**

---

All codes needed to access unit will be provided at check-in.



## CHECK-OUT

**TIME: 11:00 AM**

---

Check-out time is no later than 11:00am.

If you would like to extend your stay, please request approval at least 24 hours beforehand so we can try to accommodate your request.

# Checklist



## Departure Checklist

Friendly reminders to do before you leave.

- Turn thermostat down to 55 degrees. Do not turn it off or pipes may freeze.
- Perform a general, light cleaning.
- Please leave all beds unmade
- Remove all trash.
- Wash and put away all dirty dishes, or start a dishwasher load before you leave.
- Empty out refrigerator and freezer of any items you may have purchased.
- Turn off all appliances, lights and running water.
- Replace all remotes on coffee tables and sign out of all streaming services.
- Lock doors and windows before leaving.
- Double check to make sure you've grabbed all your belongings.

# House Rules

---

While on your vacation we ask that you follow a few rules to ensure your safety and the cleanliness of the cabin. Some of these rules are required by City ordinance, and failure to complete them could result in additional fees or eviction.



## NOISE

- Quiet hours are 10:00pm to 8:00am
- Please be respectful to our neighbors.
- Excessive noise is prohibited at all times and may result in termination of the vacation rental agreement, eviction, loss of rental paid and extra charges that may be deducted from your deposit.



## NO SMOKING

- No smoking or vaping inside the cabin.
- Any evidence or smell of cigarettes/marijuana/vape inside the home may result in additional fees being applied to your account.
- Cigarette butts must be placed in the metal bucket outside near the front steps.



## NO PARTIES

- No parties/events are permitted in the home.
- All guests must obey the house rules during their stay.
- No unregistered guests without prior approval. Only 4 registered guests are allowed in the house.



## NO PETS

- Pets are NOT allowed.
- If an unauthorized pet is found in the cabin there will be an additional fee of \$250 and the pet will need to leave the property.

# House Info

---



## SAFETY

- **Fire Extinguisher:** Located in the coat closet next to the front door.
- **First aid kit:** Located under the bathroom sink.



## PARKING

- 3 parking spaces.
- Please do not park on the street.
- Contact us if anyone other than a guest has parked in the driveway.



## TRASH/ RECYCLE

- Trash and recycling bins are located on the side of the house (to the left if you are looking at the front door).
- Trash pick-up day is Wednesday.



## AIR CONDITIONING/ HEATING

- Thermostat is located on the hallway wall in between the two bedrooms.
- Air conditioning unit is located in the window to the left of the fireplace. Please do not open the window to avoid the unit falling out.
- Please regulate the temperature to your desired level during your stay



# House Info

---



## BBQ

- A propane gas grill is available to use on the front deck. Please give the BBQ a basic cleaning after you have cooked your food and the grill has cooled down. Please replace the grill cover after use.



## WASHER & DRYER

- The washer & dryer are located in the hallway closet next to the bathroom. Supplies are kept on top of the washer. Please clean out the lint screen prior to and after usage to ensure proper functionality and safety.



## TELEVISION

- The smart TVs each offer streaming services with most platforms. Please log into your account on any desired streaming service to watch programs and movies, then log out before check-out.

# Transportation

---



## TAXI

- Big Bear Cab Company is an area resource for hitching a ride with a cab / 909-866-8294



## UBER/LYFT

- Uber and Lyft drivers do operate in Big Bear City and Big Bear Lake, although increment weather can affect availability or operation.



## BIKE RENTALS

- Renting a bike is a great way to enjoy Big Bear with the family. Big Bear Lake has hundreds of miles of bike paths, dirt trails and mountainous roads for cycling/biking and is a community that is friendly to both novice and elite riders. For most rentals, you can expect a two-hour minimum. Standard bike rentals start as low as \$30/day. Be sure to also rent a helmet for just \$5/day. Electric bikes are also available to rent. Goldsmith's Sports (909-866-2728), Bear Valley Bikes (909-866-8000), Paddles and Pedals (909-936-2907), Boulder Bay Bike Rentals (909-878-3155)

# Transportation

---



## SHUTTLES

- Take advantage of the free shuttles to get to Bear Mountain and Snow Summit! Shuttles have been outfitted with plexiglass during the pandemic. Shuttles leave from designated parking lots every 30 minutes. On weekends, it costs \$20 to park in the lots.



## EV'S

- We are proud that Big Bear offers Electric Vehicle charging. No need to worry about going green during your stay. The charging station is a public station, open for use, and is conveniently located in the heart of downtown Big Bear right behind the Re/Max.

**FREE BIG BEAR TROLLEY**  
COME AND SEE BIG BEAR & RIDE FOR FREE ANYWHERE

**RED LINE**

**KEY STOPS**

- VILLAGE SHOPS
- BLACK FOREST LODGE
- EL PASO LODGE
- WOLF CREEK LODGE
- HOSPITAL
- MOUNTAIN TRANSIT HQ
- CVS PHARMACY
- PHARMACY
- BOUYER LAKE STOP
- BOUYER LAKE
- WINDMILL STOP
- WINDMILL
- BEAR MOUNTAIN GOLF COURSE
- BEAR MOUNTAIN SIX EIGHT
- ALPINE
- WINDMILL COFFEE SHOP
- WINE DISTRICT
- APPLES, BIES AND BREAKFAST
- SHOPPER SERVICE CENTER
- STATER BROS. VONS, POST OFFICE
- SUMMIT STOP
- STATER BROS. VONS, POST OFFICE
- ALPINE STOP
- SENIOR CENTER
- BEAR MOUNTAIN THRIFT STORE
- RURAL HEALTH CENTER
- CIRCLE K MARKET
- ANNUAL STOP
- WINE DISTRICT
- WINE DISTRICT
- STATER BROS. VONS, POST OFFICE
- POST OFFICE
- CITY OF WATER PARK (WALP)
- WINDMILL AIR STOP
- SUGARLOAF FREE
- CVS PHARMACY (SUGARLOAF)
- EAST'S MARKET STOP
- BOUYER LAKE
- WINDMILL
- SUMMIT

**FREE BIG BEAR TROLLEY**  
COME AND SEE BIG BEAR & RIDE FOR FREE ANYWHERE

**BLUE LINE**

**WESTBOUND STOPS**

- VILLAGE SHOPS
- DANCE RESTAURANTS, ENTERTAINMENT
- VETERANS PARK
- VISIT BIG BEAR
- BIG BEAR LAKE POST OFFICE
- BIG BEAR MARINA
- LA LAGUNITA WATER DISTRICT (MARKS)
- LAGUNITA LODGE
- PINE KNOT MARINA
- HOLLOWAYS MARINA
- PLEASURE POINT MARINA
- COINOLA AT BIG BEAR BLVD. STOP
- BOULDER BAY PARK
- BLVD 38V AND BIG BEAR BLVD.

**EASTBOUND STOPS**

- PERFORMING ARTS CENTER
- CITY HALL
- LAKEVIEW MARKET
- BEAR CREEK LODGE
- ALPINE SLIDE AT MAGIC MOUNTAIN
- ELKS LODGE
- HOLIDAY INN RESORT
- LOOKS AT THE LAKE

**FREE BIG BEAR TROLLEY**  
COME AND SEE BIG BEAR & RIDE FOR FREE ANYWHERE

**GOLD LINE**

SERVICE WITH FREE RIDES THROUGHOUT THE VILLAGE AND THE NORTH SHORE.

**KEY STOPS**

- MOUNTAIN MEADOWS
- VILLAGE SHOPS
- BLACK FOREST LODGE
- BIG BEAR MIDDLE SCHOOL
- MEADOW PARK
- SHERIFF'S OFFICE
- SUMMIT PLAZA
- HOSPITAL
- MOUNTAIN TRANSIT HQ
- CVS PHARMACY
- STATER BROS. VONS, POST OFFICE
- AM/PM STOP
- SENIOR CENTER
- MOTEL 6
- GILDART SENIOR THRIFT STORE
- RURAL HEALTH CENTER
- CIRCLE K MARKET
- SUMMIT STOP
- GREENWAY STOP
- CHURCH OF LATTER-DAY SAINTS
- NORTH SHORE CHURCHES
- VCA ANNUAL CLINIC
- PEDAL PATH



# Hot Tub Info

## **Rule #1: Have fun, relax, unwind, and rejuvenate!**

However, please do so in a safe manner.  
We are not responsible for accidents or injuries.

---

- Please use caution when walking out to the hot tub during winter conditions. Hold onto the side of the hot tub when entering and exiting.
- Please turn off the spa jets before exiting the hot tub.
- Never sit, stand, or lie on top of the hot tub cover.
- Please do not leave children unattended. Do not bring toys into the hot tub as they can become clogged in the filter.
- Please, no hanky panky in the hot tub. In addition to making the hot tub unusable for others, you are surrounded by watchful neighbors and their security cameras.
- If you have an open cut or skin infection, please stay out of the hot tub.

# Fireplace Info



## **FIREPLACE USAGE**

This is a natural gas fireplace, so there is no need for fire starters or logs. Simply turn the gas on using the key located on the floor to the right of the fireplace. Once the gas is on, use one of the provided lighters to light the flame. You can turn the flame up or down depending on your preference. When you're done using the fireplace, please remember to turn the gas off

## **FIRE PIT USAGE**

This is a natural gas fire pit, so again – no need for fire starters or logs. Simply turn the gas on using the dial located on the side of the fire pit. Turn the dial to "LIGHT" then press the igniter button to the left. Once the flames have lit, please turn the dial to you desired level. When you're done using the fire pit, please remember to turn the dial to "OFF."

# Nearby Restaurants

---



- **572 Social**, 572 Pine Knot Ave, Big Bear Lake, CA 92315 / 909-878-0307
  - Usually with live music on the patio, this American fare restaurant serves what some consider the best burgers in town, along with poke, steaks and salads. (3.5 stars on Yelp)
- **Thelma's Family Restaurant**, 337 W Big Bear Blvd, Big Bear Lake, CA 92315 / 909-585-7005
  - This family friendly restaurant's menu includes burgers, sandwiches, Vegan, Mexican, Continental and Italian fare. (3.5 stars on Yelp)
- **Peppercorn Grill**, 553 Pine Knot Ave, Big Bear Lake, CA 92315 / 909-866-5405
  - Fine dining for steaks, salad, pizza and Italian near The Village. No kids' meals. (4 stars on Yelp)
- **Saucy Mama's Pizza**, 618 B Pine Knot Ave, Big Bear Lake, CA 92315 / 909-878-0165
  - A popular pizzeria with unique toppings, they also serve antipasto, pastas and other main dishes. (4 stars on Yelp)
- **The Old German Deli**, 40645 Village Drive, Big Bear Lake, CA 92315 / 909-878-0515
  - One of the most popular eateries in Big Bear, this deli shop offers specialty sandwiches and Kraut dogs, Brat and apple strudel. Closed on Mondays. (5 stars on Yelp)
- **Tropicali**, 40616 Village Drive, Big Bear Lake, CA 92315 / 909-878-0499
  - This Hawaiian poke bowl restaurant ranks No. 1 on Yelp in the area and No. 15 in the nation! Popular dishes include sashimi bowls, pulled pork, spicy ceviche, tofu, teriyaki chicken and barbacoa beef. (5 stars on Yelp)
- **Murray's Saloon & Eatery**, 627 Cottage Lane, Big Bear Lake, CA 92315 / 909-866-1444
  - A local favorite for years, known for its draft beer and nightly Karaoke, they serve breakfast, lunch and dinner. Open until midnight Fri-Sat. (4.5 stars on Yelp)
- **Laguna Grill**, 40844 Big Bear Blvd, Big Bear Lake, CA 92135 / 909-866-2679
  - Located near The Village, this family-friendly restaurant serves American and Mexican fare. (3.5 stars on Yelp)
- **Big Bear Lake Brewing Co.**, 40827 Stone Road, Big Bear Lake, CA 92315 / 909-878-0283
  - This brewery located near The Village serves American fare like burgers, fish tacos and bar appetizers. Family friendly. (3.5 stars on Yelp)

# Nearby Restaurants

---



- **The Café Crepe**, 41003 Big Bear Blvd, Big Bear Lake, CA 92315 / 909-809-2353
  - French owner, Leslie, serves authentic savory and sweet French crepes, and gourmet coffee and espresso drinks. Closed Tuesday-Wednesday. (5 stars on Yelp)
- **Himalayan Restaurant**, 672 Pine Knot Ave, Big Bear Lake, CA 92315 / 909-878-3068
  - Authentic Indian and Himalayan cuisine from India and Nepal. This restaurant uses fresh ingredients with home-style cooking. (4 stars on Yelp)
- **Kallans Bar and Grill**, 44761 Barton Lane N, Sugarloaf, CA 92386 / 909-547-6800
  - This is a cozy, upscale restaurant that serves American fare, breakfast and brunch. Family friendly. (4 stars on Yelp)
- **Santana & Mavericks Unique Crafted Foods**, 40771 Big Bear Blvd, Big Bear Lake, CA 92315 / 909-878-0047
  - Upscale French, Italian and Mexican fare with a range including lobster ravioli, shrimp enchiladas and salmon piccata. (4 stars on Yelp)
- **Whiskey Dave's**, 40740 Village Drive, Big Bear Lake, CA 92315 / 909-866-3283
  - Live bands on weekends, 6 pool tables, foosball, full bar with craft beers, 16 beers on tap, 20 TVs featuring all college and pro games, serving bar fare like loaded skins, fish tacos, buffalo wings, nachos and burgers. (3.5 stars on Yelp)
- **The Pines Lakefront**, 350 Alden Road, Big Bear Lake, CA 92315 / 909-866-5400
  - Established in the 1920s, The Pines offers both lake and mountain views, serving upscale family-friendly American fare like burgers, sandwiches, steak, salad, and Vegan food. Reservations accepted (3.5 stars on Yelp)
- **Gaby's Latin Flavors**, 41618 Big Bear Blvd, Big Bear Lake, CA 92315 / 909-353-8839
  - Delicious Mexican food and tasty, authentic Bolivian specialties, as well as traditional American fare such as burgers, salads, and pastas (4.5 stars on Yelp)
- **Hacienda Grill**, 41787 Big Bear Blvd, Big Bear Lake, CA 92315 / 909-866-8667
  - Family-friendly Mexican restaurant with fare like fish tacos, enchiladas, molcajete and tortilla soup (3.5 stars on Yelp)
- **Dank Donuts**, 42612 Moonridge, Big Bear Lake, CA 92315 / 909-547-6053
  - Fresh donuts, stuffed croissants, breakfast burritos, Vegan + gluten-free ramen, orange chicken and rice, beer, champagne, and a variety of carry-out snacks (4.5 stars on Yelp)



# Nearby Restaurants

---



- **Sweet Basil Bistro**, 40629 Big Bear Blvd, Big Bear Lake, CA 92315 / 909-866-9212
  - Lobster lasagna, marinated flank steak, Gorgonzola stuffed filet, garlic fritters and more fill this intimate, authentic country Italian restaurant's menu (4 stars on Yelp)
- **Village Pizza**, 40568 Village Dr, Big Bear Lake, CA 92315 / 909-866-8505
  - Traditional pizza at The Village. Family-friendly. (3.5 stars on Yelp)
- **Oakside Restaurant & Bar**, 40701 Village Dr, Big Bear Lake, CA 92315 / 909-866-5555
  - Upscale dining serving dishes like Macadamia nut crusted filet of Hawaiian Monchong, shrimp poke, bone-in ribeye steak, baby back ribs, French onion soup, calamari and flatbread pizza (4 stars on Yelp)
- **Fire Rock Burgers & Brews**, 618 Pine Knot Ave, Suite B, Big Bear Lake, CA 92315 / 909-878-0696
  - **Unique burgers**, fresh cut fries, onion rings, tater tots, and a large selection of rotating craft beers. Try their carne asada fries or avocado spring rolls! Kids can design a guitar pick kid's menu for the "pick wall" (4 stars on Yelp)
- **Grizzly Manor Café**, 41268 Big Bear Blvd, Big Bear Lake, CA 92315 / 909-866-6226
  - Grizzly size portions of popular and unique breakfast dishes and burgers. Make sure to get on their waitlist before heading over! (4.5 stars on Yelp)
- **Fuji Japanese Cuisine**, 41025 Big Bear Blvd, Big Bear Lake, CA 92315 / 909-866-8108
  - Sushi, sashimi and teppan with Japanese sushi chefs and staff (3 stars on Yelp)
- **Sister My Sister Bake Shop**, 40191 Big Bear Blvd, Big Bear Lake, CA 92315 / 909-878-0878
  - This little bakery specializes in custom cakes, unique cupcakes, breads, desserts and much more. It has become a go-to favorite in town (4.5 stars on Yelp)
- **North Shore Café**, 39226 N Shore Dr, Fawnskin, CA 92333 / 909-866-5879
  - Serving breakfast and lunch specialties like carrot cake French toast and an artichoke melt in a casual, comfortable café setting with charming outdoor patio dining (4 stars on Yelp)
- **The Barnstorm Café**, 501 W Valley Blvd, Big Bear City, CA 92314 / 909-585-9339
  - The best kept secret in Big Bear, particularly for brunch, this joint near the airport has been feeding locals for decades. Enjoy more than 50 popular breakfast dishes (3.5 stars on Yelp)

# Nearby Restaurants

---



- **Bone Yard Bar & Grill**, 560 Pine Knot Ave, Big Bear Lake, CA 92315 / 909-878-0401
  - Pulled pork, baby back ribs, burgers, tri-tip sandwich, BBQ chicken flatbread, Redneck nachos, cornbread, macaroni and more! (3.5 stars on Yelp)
- **Muchachos Tortilla Bar**, 40760 Village Dr, Big Bear Lake, CA 92315 / 909-415-1077
  - Carne Asada, enchiladas, battered shrimp tacos, fajitas and burgers (4 stars on Yelp)
- **Teddy Bear Restaurant**, 583 Pine Knot Ave, Big Bear Lake, CA 92315 / 909-866-5415
  - Specializing in home-style cooking and pies made from scratch on the premises since 1971. Known for their original soups, chili, machaca and old-fashioned shakes and malts (4 stars on Yelp)

# Outdoor Activities

---



## SKIING & SNOWBOARDING

For Big Bear Mountain Resort, guests may purchase lift tickets online, on the Big Bear Mountain Resort app, at ticket windows, or by calling 844-GO2-BEAR

For Snow Valley, guests may purchase lift tickets online, at the ticket windows, or by calling 909-867-275

## SKI & SNOWBOARD RENTALS

All mountain resorts have equipment rentals on site. Other local options include: Blauer Board Shop (909- 366-5085); Goldsmith's Sports (909-866-2728); Getboards (909-878-3155); Ski Haus (909-866-7411)

## SNOWSHOEING

Go solo or join an expert lead tour with Action Tours or the Big Bear Discovery Center. Stop by Goldsmith's Sports or Bear Valley Bikes for snowshoe rentals. Adventuring on Nation Forest trails is permitted year round. Adventure Passes are required to park in most trail head parking lots.

## SNOW TUBING

Big Bear Snowplay and Alpine Slide are cash-only operations (ATM on site). Hours of operation: Starting November 14th through Easter, both offer day sessions from 10am-4pm and nighttime Glow Tubing sessions on Fridays, Saturdays and Holidays from 5pm-9pm. Big Bear Snowplay: 42825 Big Bear Blvd, Big Bear Lake, CA 909-585-0075; Alpine Slide: 800 Wildrose Lane, Big Bear Lake, CA 909-866-4626

# Family Activities

---

## PICNIC

The grassy beachfront area of Ski Beach/Meadow Park is a favorite spot for picnicking. The kids won't get bored with the park nearby and there are multiple play zones. The lake is there, offering an area to take a short hike, feed the ducks and simply enjoy the beautiful mountain views. 41180 Park Ave, Big Bear Lake, CA 92315

## GOLD RUSH MINING ADVENTURES

Pan for real gold, gemstones and crystals, harvest pearls right from the oyster, or excavate fossils. Keep all that you find! Personalized gemstones and numerology offered in addition to the metaphysical gems for healing. 40016 Big Bear Blvd, Big Bear Lake, CA 92315 / 909-866-5678

## BEAR ALPINE ZOO

Visit mountain lions, bears, eagles, wolves, racoons and more at this safe haven for injured or orphaned wildlife. More than 90% of animals brought here for rehabilitation are successfully released back into their native environments. 747 Clubview Drive, Big Bear Lake, CA 92315 / 909-584-1299

## BOULDER BAY PARK

This park is located on the west end of Big Bear Lake (near Alpine Slides) and offers lots of attractions and facilities, including a large bandstand, restrooms and a huge dock for fishing or gazing with a spectacular view. Several islands made entirely of boulders in the Bay are fun if you are canoeing or kayaking. The dock and picnic tables are popular with families who come to hang out and enjoy the park. 39180 Big Bear Blvd, Big Bear Lake, CA 92333



# Seasonal Activities

---



## **HOLLOWAY'S MARINA & RV PARK**

Rent pontoon boats, go fishing, rent fishing equipment, take wakeboard and water ski rides, rent kayaks and canoes, ride the pirate ship, and much more! 398 Edgemoor Rd, Big Bear Lake, CA 92315 / 909-866- 5706

## **BIG BEAR ROPES COURSE**

Year round (weather permitting). New and exhilarating aerial adventure that will have you balancing on ropes, crossing bridges, and climbing through obstacles. Participants are on a self-guided tour through 37 obstacles spread over 6,400 square feet on 2 levels that are 12-35 feet in the air. 42825 Big Bear Blvd, Big Bear Lake, CA 92315 / 909-585-0075

## **BEAR MOUNTAIN GOLF COURSE**

Whether you're a scratch golfer, new to the game, or somewhere in between, Bear Mountain Golf Course offers a unique experience for players of all skill levels. The course is typically open to the public from mid-May through October. 43102 Goldmine Drive, Big Bear Lake, CA 92315 / 909-866-5706

## **SUMMIT BIKE PARK**

Big Bear Resort has over 57 miles of gravity-fed trails on the mountain, plus 20 miles of Forest Service roads! From beginner features like Small Wonder and the Skill Builder Park to more advanced runs like 10-Ply and Party Wave, there's something here for bikers of all skill levels. Must purchase a lift ticket to ride the trails. <https://www.bigbearmountainresort.com/mountain-biking>

# Things to do

---

## LAKESIDE ACTIVITIES

Take a couple layers of clothing, snacks and drinks, and head to Juniper Point or Trout Alley to make sandcastles, splash in the water and soak in the majestic mountain views. If you plan on fishing, pick up a day license at Big Bear Sporting Goods.

## BIG BEAR SPEEDWAY

Spring, summer and fall. A real racing experience with full-featured SODI RT8 Karts, complete with innovative technology. Choose either a single kart or a double training kart with two steering wheels for double riders. Compete against the clock while reaching speeds up to 30 mph on a 1/5 mile open-air racetrack filled with hairpin turns and s-curves. 42825 Big Bear Blvd, Big Bear Lake, CA 92315 / 909-585- 0075

## BIG BEAR VALLEY HISTORICAL MUSEUM

Peruse an extensive collection of artifacts from the indigenous Serrano Indians, the fold mining era, cowboys and cattle ranching, logging, fox farming and early winter sports. Panning for gold on the premises is a favorite family activity. 3800 B Greenway Drive, Big Bear, CA 92314 / 909-585-8100

## YEAR-ROUND TOURS

- Book horseback riding tours with Baldwin Lake Stables 909-585-6482
- Book Zipline and Segway adventures with Action Tours 909-866-0390
- Book high flying helicopter tours with Helicopter Big Bear 909-585-1200
- Boog 4x4 Jeep tours with Big Bear Jeep Experience 909-420-5828



# Trails

---

An Adventure Pass is required to park at trailheads and in some lots. Purchase a day pass at the Visitor Center, Big Bear Sporting Goods, Lakeview Market or Chirp Nature Centers



## **PINE KNOT TRAIL**

Pine Knot Trail to Grand View Point is a 6.9 mile heavily trafficked out and back trail that features a lake and is rated as moderate. The trail is primarily used for hiking, running, horses and mountain biking and is best used from March until November. Dogs are allowed on this trail but must be kept on leash. 1E01, Mill Creek Road, Big Bear Lake, CA 92315

## **CASTLE ROCK TRAIL**

Castle Rock Trail is a 2.6 mile heavily trafficked out and back trail that offers the chance to see wildlife and is rated as moderate. The trail offers a number of activity options and is best used from March to October. Dogs are also allowed to use this trail. Located just off Highway 18, a mile east of Big Bear Dam: 1W03, Big Bear Blvd, Big Bear Lake, CA 92315

## **CHAMPION LODGEPOLE PINES**

Champion Lodgepole via Castle Rock Trail is a 4.3 mile moderately trafficked loop trail that features a lake and is rated as moderate. The trail is primarily used for hiking, nature trips and mountain biking, and is accessible year-round. Dogs are allowed on this trail. Follow Mill Creek Road (2N10) left after it intersects with Tulip Lane until you reach 2N11, then bare left and follow the Champion Lodgepole signs to the parking area.

## **AGA RIDGE TRAIL**

idge Trail o Aga Ridge Trail to Bow Canyon Trail Loop is a 2.5 mile moderately trafficked out and back trail that offers the chance to see wildlife and is rated as moderate. The trail offers several activity options. 43665 Shasta Road, Big Bear Lake, CA 92315

# Trails

---



## **JENKS LAKE TRAIL**

Jenks Lake Trail is a 3.1 mile moderately trafficked out and back trail that features a lake and is good for all skill levels. The trail is primarily used for hiking and walking and is accessible year-round. Dogs are also able to use this trail but must be kept on a leash. Barton Flats Visitor Center to Jenks Lake. Jenks Lake Trail begins at the Barton Flats Visitor Center on the Rio Monte Trail

## **COUGAR CREST TRAIL**

Cougar Crest Trail is a 5.3 mile heavily trafficked out and back trail that features beautiful wildflowers and is rated as moderate. The trail offers a number of activity options and is best used from March until November. Dogs are allowed to use this trail but must be kept on a leash. Close to the Big Bear Discover Center parking lot just off Highway 38. If you don't mind walking the extra half mile from the Discovery Center to the trailhead, you'll enjoy free parking until 5pm.

## **WOODLAND INTERPRETIVE TRAIL**

This unique Big Bear hiking path is the perfect spot to bring the whole family. Woodland Interpretive Trail is an easy 1.5 mile loop that has only 300 feet of elevation gain. In addition to being a great short workout, the hike is also educational. Grab a pamphlet at the entrance and follow the self-guided tour to learn more about the local flora, fauna and geology. Drive around to the north side of the lake until you hit Highway 38. The entrance to the trail is about a quarter mile west of the Stanfield Cutoff.

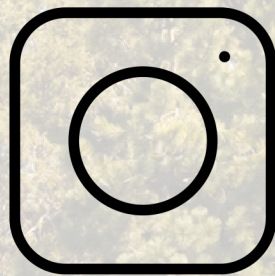


# Social Media

---


Connect with us on  
**Instagram**

Follow. Like. Tag.



@petiteretreatbigbear



Open  & Scan me

---

**Petite Retreat**

# Thank You



Thank you again for choosing to stay with us during your time in Big Bear!



We hope you had a wonderful stay. If you have a few minutes, we love to hear feedback from you. Please leave a five star review if you enjoyed your stay!

If you feel that your stay is not 5 star worthy please contact us so we can fix the issue and make your experience great!

*Hannah Feash*